

[Novel Coronavirus (COVID-19) Preventive measures]

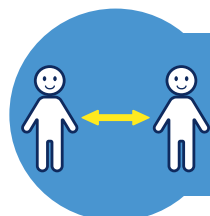
Thank you very much for using Hokkaido Resort Liner.

We ask our customers for their cooperation in the following matters when conducting bus tours.

We are thoroughly implementing infection prevention measures for each bus company and taxi company that operate the Hokkaido Resort Liner.

Requests to our customers.

① Ensuring physical distance.(Outside the vehicle)



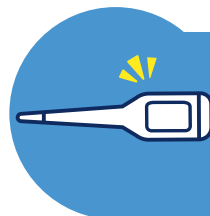
When gathering and getting on and off, please avoid close contact with the surrounding passengers and keep a sufficient distance.

② Seat restrictions.(Inside the vehicle)



We do not set seat restrictions and it will be no seat assignment as usual. Please note that depending on the reservation status, it may be shared seat with other passengers.

③ Request for Physical condition management by yourself.



Please note that not allowed use to Hokkaido Resort Liner will be refused in the following cases.

- You have a fever of 37.5°C or higher.
- You are poor physical condition.
- You have cold symptoms such as coughing, sore throat, sneezing, runny nose etc...
- You have infected with Coronavirus or You are in close contact with infected person.
- You suspect of being in close contact with infected person.

*We have non contact thermometer at our Hokkaido Resort Liner Tour Desk. You can check your temperature by yourself if you need.

④ Request for hands sanitizer before getting on and off.



When getting on and off the vehicle, please disinfect your hands with the disinfectant solution it at the exit of a vehicle or inside the vehicle.

⑤ Wearing a mask • Coughing etiquette, • About conversation on the vehicle.



Please wear a mask or something similar a mask while on the vehicle. And please protect your cough etiquette and refrain from talking. In case it is difficult to wear a mask, please let us know in advance.

⑥ Other requests while on the vehicle.



Please refrain from as much as possible eating on the vehicle. Drinking on the vehicle is prohibited. Please take your own rubbish with you. Also please refrain moving from your seat.

Efforts to preventive infection for each bus company and taxi company.

① Wearing a mask.



We wearing a mask from start operating to the end operating.

② Implementation of body temperature measurement.



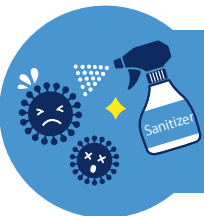
We measure the driver's body temperature at daily roll-call.

③ Implementation of hands sanitizer for drivers.



We disinfect hands before and after driving.

④ Cleaning the inside of the vehicle.



We thoroughly disinfect and clean up the inside of the vehicle before and after each operation.

⑤ Ventilation inside the vehicle.



We always set the air conditioner in the vehicle to the outside air mode and ventilate. Sometimes, We may adjust temperature depending on the situation. Also we will may open the windows and replace the air while at the rest areas or sightseeing spots.

Regarding ventilation function of the bus.

Vehicles used for bus tours are equipped with sufficient ventilation function, and air inside the vehicle replaced in about 5 minutes.

● Refer to the URL;

* The reference URL is subject to change.

Mitsubishi FUSO [https://www.mitsubishi-fuso.com/oa/jp/information/COVID-19_measure_sightseeing_bus/]

Hino S'elega [<https://www.hino.co.jp/corp/news/2020/20200702-002655.html>]